



Centre for  
Trials Research



Canolfan  
Ymchwil Treialon



CANCER  
RESEARCH  
UK

# Centre for Trials Research Cancer Division

**Lisette Nixon**  
**Senior Research Fellow**  
**Senior Trial Manager**

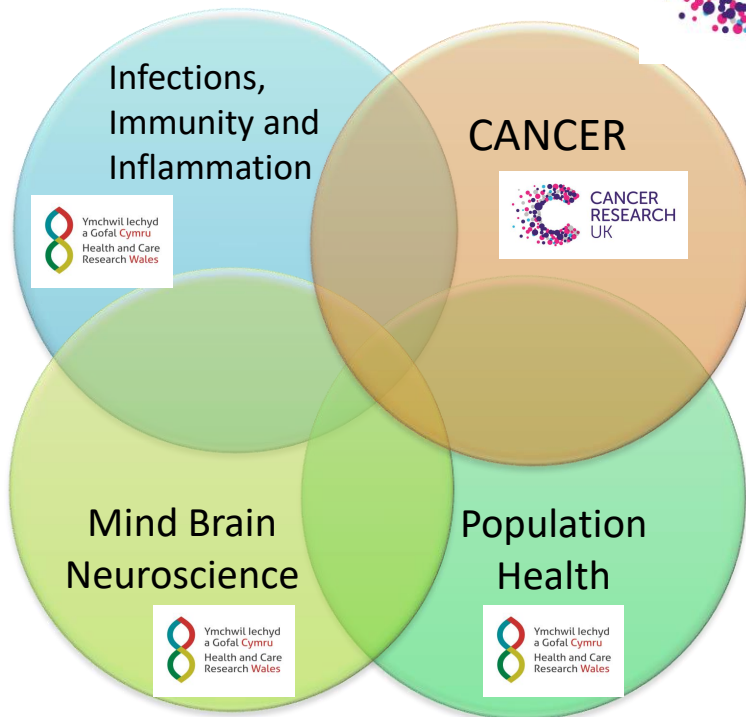
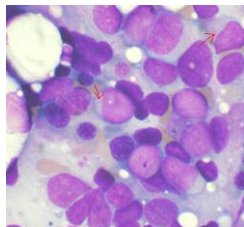
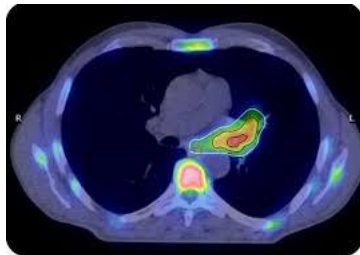
**Chris Hurt**  
**Principal Research Fellow**  
**Senior Statistician**



Ymchwil Iechyd  
a Gofal Cymru  
Health and Care  
Research Wales

College of Biomedical and Life Sciences

# Centre for Trials Research



CANCER RESEARCH UK



Canolfan Ymchwil Cancer Cymru  
Wales Cancer Research Centre



Canolfan PRIME Cymru  
Wales PRIME Centre



Care and support through terminal illness

Marie Curie Palliative Care Research Centre

CARDIFF



161 staff 45 in cancer

	Theme 1	Theme 2	Theme 3	Emerging Theme	Cross Cutting	
Themes	<p><b>Haemato-logical malignancy trials</b></p>	<p><b>Multi-modality precision therapy trials</b></p>	<p><b>Novel and Con-temporary method-ologies</b></p>	<p><b>Early diagnosis</b></p>		
	<ul style="list-style-type: none"> <li>• AML series of trials with AML18 and AML19 currently open</li> <li>• Li-1 in elderly</li> <li>• ALL: EWALL</li> <li>• Genomic analysis</li> </ul>	<ul style="list-style-type: none"> <li>• Upper GI (SCOPE1, NEOSCOPE, SCALOP, SCOPE2)</li> <li>• Lower GI (CORINTH)</li> <li>• H&amp;N (PATHOS, PEARL, Best of)</li> <li>• Lung (PIN, VIM)</li> <li>• Breast (FAKTION/FURVA)</li> <li>• International</li> <li>• Surgery</li> <li>• Radiotherapy</li> <li>• Immunotherapy</li> <li>• Palliative</li> <li>• Imaging</li> <li>• Translational</li> </ul>	<ul style="list-style-type: none"> <li>• Collaborate with ECMCs, CTRad , NHS on RT trials methodology</li> <li>• Use or routine data</li> <li>• Develop trial designs to incorporate biomarkers and imaging</li> <li>• Umbrella /Platform trials</li> </ul>	<ul style="list-style-type: none"> <li>• CONSCOP2 (FORE-AI, SIRIUS)</li> </ul>	<p><b>Supportive Care</b></p>	<p><b>Translational Research</b></p>

# Emerging: Early diagnosis

- **CONSCOP2 (SD)** – colorectal cancer screening
  - imaging of high risk polyps
  - FORE AI
  - Samples- translational (pending)
- **TIC-TOC** -a symptom awareness campaign to support the Multidisciplinary/Rapid Diagnostic Centre referral pathway
- **CABS (KB)**– Problems seeking help for cancer symptoms during COVID.
- **ABACus (KB)** RCT of the health check intervention to improve cancer symptom awareness and help-seeking among people living in socioeconomically deprived communities.

# Areas of development

- Screening
- Therapies
- Behaviour change
  - Prehabilitation
- Platform studies
- Recurrence
  - Cytosponge
- Dissemination and public engagement